

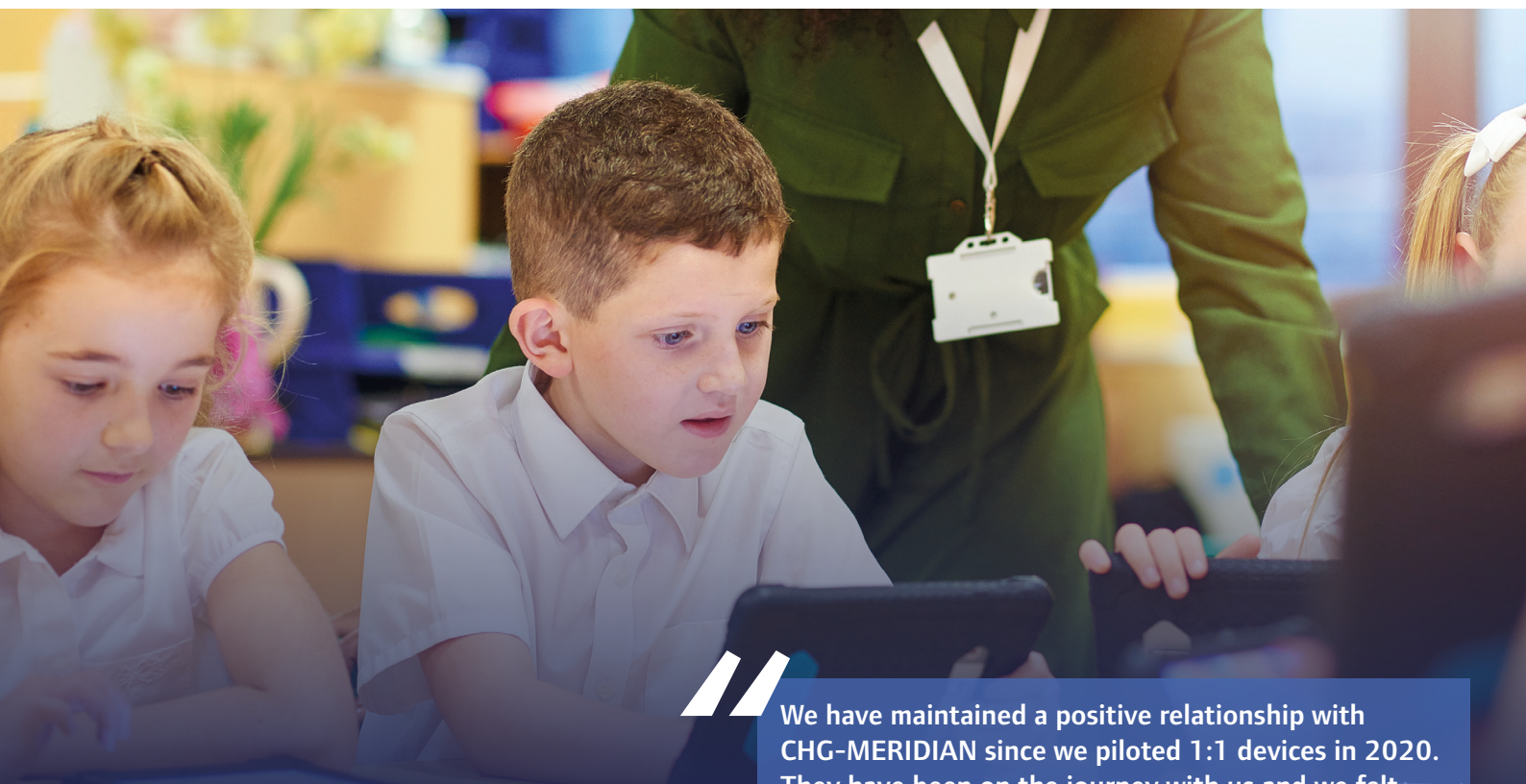
Windsor Academy Trust

Windsor Academy Trust (WAT) is a family of schools committed to unlocking students' academic and personal potential. They put children at the centre of everything they do, delivering excellent education to 7,000 students aged 2 to 18 driven by 1,000 committed, inspiring and talented staff.



Established in 2011, WAT has grown to nine successful schools: including Windsor High School and Sixth Form, Kingswinford Academy, Great Wyrley Academy, Cheslyn Hay Academy, Goldsmith Primary Academy, Rivers Primary Academy, Manor Way Primary Academy, Tenterfields Primary Academy and Colley Lane Primary Academy. Two new secondary free schools are also due to open and there are further plans for growth.

Through collaborative leadership and future thinking, their vision is to continue to grow and provide the highest quality education to enable every student to realise their potential. A powerful component of this success is the synergy of primary and secondary collaboration and their innovative approach.



We have maintained a positive relationship with CHG-MERIDIAN since we piloted 1:1 devices in 2020. They have been on the journey with us and we felt confident that they understood the market well and what we were trying to achieve.

When we re-engaged with CHG-MERIDIAN for the third phase of our rollout programme, we were in the process of migrating our 1:1 digital learning approach to a centrally-funded leasing model. This was to ensure all students in Years 4-11 have access to a 1:1 iPad for use at both school and home. CHG-MERIDIAN were flexible in their approach and presented us with a very competitive offer, which enabled us to change suppliers – a decision we were very happy to make.”

Mark Moody, Chief Finance Officer, Windsor Academy Trust



What did Windsor Academy Trust need?

Windsor Academy Trust's 1:1 Digital Learning Strategy forms part of WAT's world-class curriculum and digitally rich environment that equips students with the skills they need for the future. The initiative was launched in 2020 and Early Impact Studies highlighted the positive effect 1:1 devices were having, with excellent feedback from staff, students and parents. As a result, the programme was expanded to ensure every child in years 4, 5, 6, 7, 8, and 9 has a personal iPad to power up their learning at school and at home.

When WAT approached CHG-MERIDIAN, the trust required 1,075 Apple iPads and integrated keyboard cases for the third phase of its 1:1 digital learning programme.

Were you comparing alternative solutions?

WAT has been in discussions with CHG-MERIDIAN since the pilot of our 1:1 Digital Learning Strategy in 2020, however, it wasn't until we were ready to embark on the third phase of our expansion programme that an official partnership was established.

How did you hear about what CHG-MERIDIAN do?

We were first introduced to CHG-MERIDIAN three years ago via an industry leading multi-platform solutions provider.

Would you describe a few of the reasons you decided to proceed with CHG-MERIDIAN?

CHG-MERIDIAN clearly demonstrated a good understanding of the market and actively listened to our specific requirements, taking a collaborative approach. **They showed a high level of adaptability and presented us with a favourable commercial offer, which enabled us to change suppliers.**

How has the Government's Public Sector Decarbonisation Scheme (PSDS) been beneficial to the trust i.e. improvements/cost saving etc.

Windsor Academy Trust is committed to a more sustainable future and it is part of our moral purpose to leave the world in a better place for future generations. Sustainability is one of our strategic big moves and we have set an ambitious and aspirational target to be net zero by 2030. Sustainability and decarbonisation are key to achieving this target, and that's why we applied for the PSDS funding to support us on that journey.

Over £4m has been invested in school buildings over the last two years through PSDS 1-3a funding rounds to reduce environmental impact at Cheslyn Hay Academy, Goldsmith Primary Academy, Great Wyrley Academy, Kingswinford Academy, Manor Way Primary Academy, Tenterfields Primary Academy and Windsor High School and Sixth Form.

Funded through School Condition Allocation funding, the Low Carbon Skills Fund and the PSDS, the work included installing solar panels, fitting double glazed windows, upgrading to LED lighting, improving insulation, replacing gas-fired heating systems with air source heat pumps, enhancing mechanical infrastructures and the enhancement of energy management and monitoring systems.

The changes made are significantly improving energy efficiencies and reducing our reliance on non-renewable energy sources. In turn, we are reducing our greenhouse gas emissions; since April 2021 we have reduced by 141 metric tonnes (the equivalent to powering 92 homes) and generated over 600,000 kWhrs of sustainable energy for our schools, resulting in major cost savings across the trust.

Through further planned investment in solar panels across our schools, our aim is for 100% of our energy to be provided from sustainable sources and green energy suppliers.

The positive environmental impact of this work and other initiatives is shared regularly with children, parents and communities to increase awareness, inspire change and demonstrate how the Trust is achieving its 2030 target. Sustainability is now a six week topic area in our primary curriculum and, earlier this year, students and staff across the trust organised our very first WAT COP Sustainability Summit.

The work we are doing is leading the conversation as well – whether that's with parents outside schools as they see solar panels being installed or with our peers across the education sector as a thought leader in the field of sustainability.

How does working with CHG-MERIDIAN make our IT estate more sustainable?

CHG offers a **carbonZERO funding solution** which will make a positive impact on WAT's overall carbon footprint moving forward. It works by allowing us to offset any CO₂ generated at the production, transportation, use phase, and end-of-lease phase our IT assets, and we get certification that we are contributing towards climate mitigation projects partnered through CHG. Digital devices also ensure we reduce our reliance on printing and copying and the leasing model helps promote a circular economy.



CHG-MERIDIAN UK Education Team Contacts:

Kim Plumb, Business Development Manager
Mob: 07966 782948 | Email: kim.plumb@chg-meridian.com

Martyn Maskell, Business Development Manager
Mob: 07738 124383 | Email: martyn.maskell@chg-meridian.com

Hannah Hulm, Business Development Manager
Mob: 07876 883117 | Email: hannah.hulm@chg-meridian.com

Daniel Talhadas, Head of Public Sector
Mob: 07967 292924 | Email: daniel.talhadas@chg-meridian.com

Email: education@chg-meridian.com Twitter: @CHGEducation
www.chg-meridian.co.uk



**Supporting the Education sector
for over 40 years**
**+1,000 UK Schools have current
lease agreements with CHG**